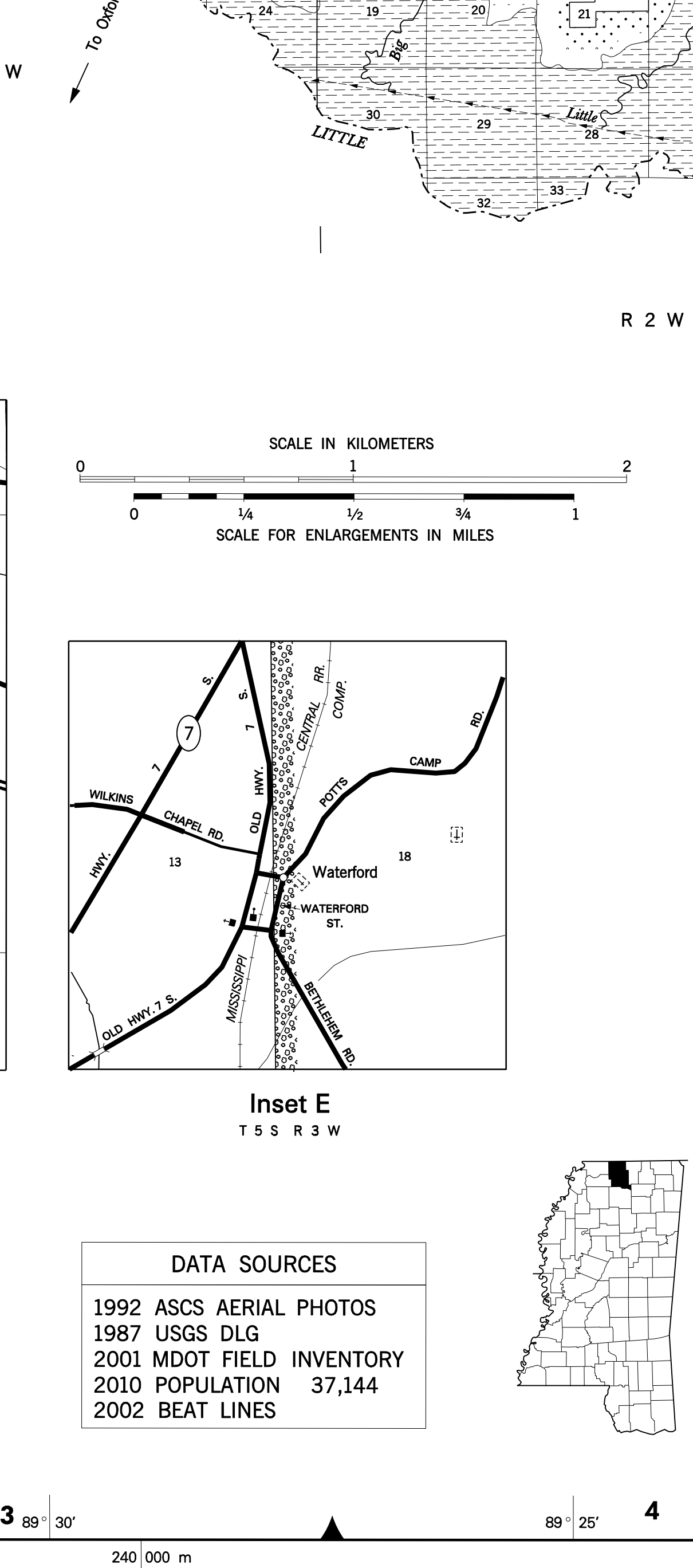
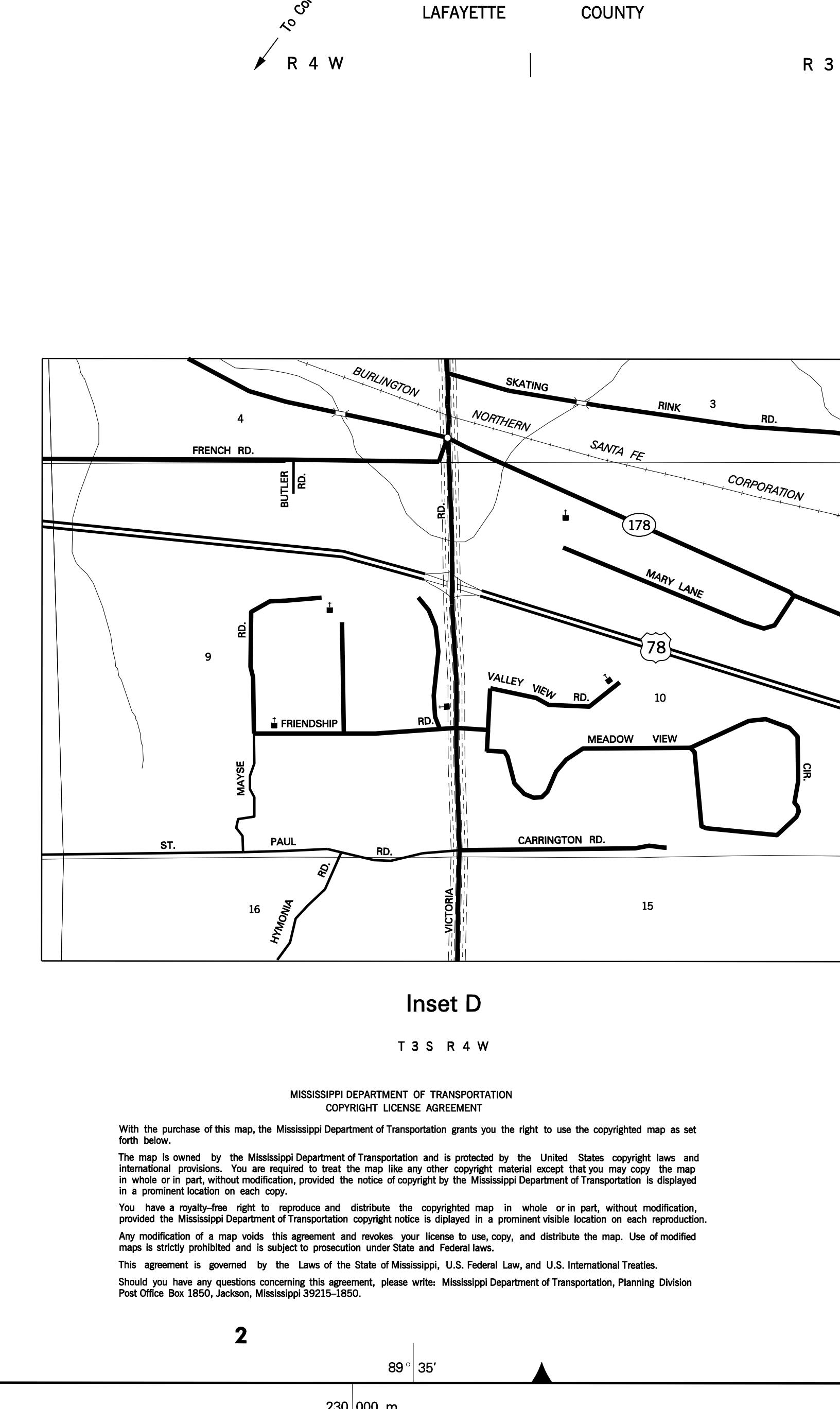


- LEGEND**
- ROADS AND ROADWAY FEATURES**
- UNIMPROVED ROAD
  - GRAVEL ROAD
  - PAVED ROAD
  - UNIMPROVED HIGHWAY
  - DIVIDED HIGHWAY
  - INTERSTATE SYSTEM
  - CITY STREETS
- HIGHWAY BRIDGES**
- BRIDGE 50 FEET AND OVER
  - EMBANKMENT
  - FERRY (FREE OR TOLL)
  - HIGHWAY GRADE SEPARATION
  - HIGHWAY INTERCHANGE
- ROAD SYSTEM DESIGNATION**
- INTERSTATE NUMBERED
  - U.S. NUMBERED
  - STATE NUMBERED
- RAILROADS**
- RAILROAD STATION
  - GRADE CROSSING
  - RAILROAD ABOVE
  - RAILROAD BELOW
- AIRPORTS**
- MILITARY AIRPORT
  - AIRPORT LIMITED FACILITIES
  - LANDING AREA OR STRIP (INCLUDING PRIVATE AIR FIELDS)
  - AIRPORT COMPLETE FACILITIES
  - AIRWAY LIGHT BEACON
- DRAINAGE AND NATURAL FEATURES**
- NARROW STREAM
  - DRAINAGE DITCH
  - LAKES AND RESERVOIRS
  - OVERFLOW LAND
  - MARSH OR SWAMP LAND
- CITY AND VILLAGE CENTERS**
- DOCK, PIER OR LANDING
  - LEVEE OR DIKE
  - LEVEE OR DIKE WITH ROAD
- CITY AND VILLAGE CENTERS**
- COUNTY SEAT
  - OTHER CITIES AND VILLAGES
- MISCELLANEOUS**
- TRIANGULATION STATION
  - BENCH MARK WITH ELEVATION
- PUBLIC SERVICE FACILITIES**
- OBSERVATION OR LOOKOUT TOWER
  - HIGHWAY GARAGE
  - POST OFFICE
  - WEIGHT STATION
  - SEWAGE DISPOSAL PLANT
  - COMMUNITY CENTER OR TOWNHALL
  - NATIONAL PARK GARAGE
  - FIRE STATION
  - PUBLIC LIBRARY
  - SANITARY LAND FILL
  - CORRECTIONAL INSTITUTION
  - POLICE STATION
  - GRAVEL PIT
  - REST AREA
- CONSERVATION AND RECREATION**
- MOTEL OR HOTEL
  - CAMP OR LODGE
  - HISTORIC OR SCENIC SITE
  - FAIR GROUNDS OR RACE COURSE
  - SMALL PARK
  - GOLF COURSE OR COUNTRY CLUB
- INDUSTRIAL**
- FACTORY OR INDUSTRY
  - SEASONAL INDUSTRY
- CHURCHES AND CEMETERIES**
- CHURCH
  - CEMETERY
  - CHURCH WITH CEMETERY ADJACENT
- BOUNDARIES**
- STATE BOUNDARY
  - COUNTY BOUNDARY
  - SEAT LINE
  - CONGRESSIONAL TOWNSHIP
  - SECTION LINE
  - NATIONAL OR STATE FOREST
  - RESERVATION, PARKS, ETC.
  - URBAN AREA CONTRACT
  - INCORPORATED PLACES
  - UNINCORPORATED DELIMITED AREAS
- EDUCATION**
- SCHOOL
- MISCELLANEOUS STRUCTURES**
- ARMORY
  - FORT, ARMY CAMP

- LEGEND**
- ROADS AND ROADWAY FEATURES**
- UNIMPROVED ROAD
  - GRAVEL ROAD
  - PAVED ROAD
  - UNIMPROVED HIGHWAY
  - DIVIDED HIGHWAY
  - INTERSTATE SYSTEM
  - CITY STREETS
- HIGHWAY BRIDGES**
- BRIDGE 50 FEET AND OVER
  - EMBANKMENT
  - FERRY (FREE OR TOLL)
  - HIGHWAY GRADE SEPARATION
  - HIGHWAY INTERCHANGE
- ROAD SYSTEM DESIGNATION**
- INTERSTATE NUMBERED
  - U.S. NUMBERED
  - STATE NUMBERED
- RAILROADS**
- RAILROAD STATION
  - GRADE CROSSING
  - RAILROAD ABOVE
  - RAILROAD BELOW
- AIRPORTS**
- MILITARY AIRPORT
  - AIRPORT LIMITED FACILITIES
  - LANDING AREA OR STRIP (INCLUDING PRIVATE AIR FIELDS)
  - AIRPORT COMPLETE FACILITIES
  - AIRWAY LIGHT BEACON
- DRAINAGE AND NATURAL FEATURES**
- NARROW STREAM
  - DRAINAGE DITCH
  - LAKES AND RESERVOIRS
  - OVERFLOW LAND
  - MARSH OR SWAMP LAND
- CITY AND VILLAGE CENTERS**
- DOCK, PIER OR LANDING
  - LEVEE OR DIKE
  - LEVEE OR DIKE WITH ROAD
- CITY AND VILLAGE CENTERS**
- COUNTY SEAT
  - OTHER CITIES AND VILLAGES
- MISCELLANEOUS**
- TRIANGULATION STATION
  - BENCH MARK WITH ELEVATION
- PUBLIC SERVICE FACILITIES**
- OBSERVATION OR LOOKOUT TOWER
  - HIGHWAY GARAGE
  - POST OFFICE
  - WEIGHT STATION
  - SEWAGE DISPOSAL PLANT
  - COMMUNITY CENTER OR TOWNHALL
  - NATIONAL PARK GARAGE
  - FIRE STATION
  - PUBLIC LIBRARY
  - SANITARY LAND FILL
  - CORRECTIONAL INSTITUTION
  - POLICE STATION
  - GRAVEL PIT
  - REST AREA
- CONSERVATION AND RECREATION**
- MOTEL OR HOTEL
  - CAMP OR LODGE
  - HISTORIC OR SCENIC SITE
  - FAIR GROUNDS OR RACE COURSE
  - SMALL PARK
  - GOLF COURSE OR COUNTRY CLUB
- INDUSTRIAL**
- FACTORY OR INDUSTRY
  - SEASONAL INDUSTRY
- CHURCHES AND CEMETERIES**
- CHURCH
  - CEMETERY
  - CHURCH WITH CEMETERY ADJACENT
- BOUNDARIES**
- STATE BOUNDARY
  - COUNTY BOUNDARY
  - SEAT LINE
  - CONGRESSIONAL TOWNSHIP
  - SECTION LINE
  - NATIONAL OR STATE FOREST
  - RESERVATION, PARKS, ETC.
  - URBAN AREA CONTRACT
  - INCORPORATED PLACES
  - UNINCORPORATED DELIMITED AREAS
- EDUCATION**
- SCHOOL
- MISCELLANEOUS STRUCTURES**
- ARMORY
  - FORT, ARMY CAMP



**GENERAL HIGHWAY MAP**

# MARSHALL COUNTY

MISSISSIPPI  
© 2005

MISSISSIPPI DEPARTMENT OF TRANSPORTATION  
PLANNING DIVISION  
IN COOPERATION WITH THE  
U.S. DEPARTMENT OF TRANSPORTATION  
FEDERAL HIGHWAY ADMINISTRATION  
TRANSVERSE MERCATOR PROJECTION,  
STATE PLANE COORDINATE SYSTEM 1983

SCALE IN KILOMETERS  
SCALE IN MILES

**DATA SOURCES**

- 1992 ASCS AERIAL PHOTOS
- 1987 USGS DLG
- 2001 MDT FIELD INVENTORY
- 2010 POPULATION 37,144
- 2002 BEAT LINES

With the purchase of this map, the Mississippi Department of Transportation grants you the right to use the copyrighted map as set forth herein.

This map is based on the Mississippi Department of Transportation and is provided to the United States copyright laws and international provisions. This map is provided to the United States copyright laws and international provisions. This map is provided to the United States copyright laws and international provisions. This map is provided to the United States copyright laws and international provisions.

Any modification of a map, such as this, without modification, provided the Mississippi Department of Transportation copyright notice is displayed in a prominent visible location on each reproduction.

This agreement is governed by the laws of the State of Mississippi, U.S. District Court, and U.S. International Trade.

Should you have any questions concerning this agreement, please write: Mississippi Department of Transportation, Planning Division, P.O. Box 1050, Jackson, Mississippi 39205-1050.

THIS MAP WAS COMPUTER GENERATED